



MONTHLY MEMBERSHIP PROGRESS REPORT

District A 1

Results as of: 03/31/2019

GMT: CHRIS LEWIS

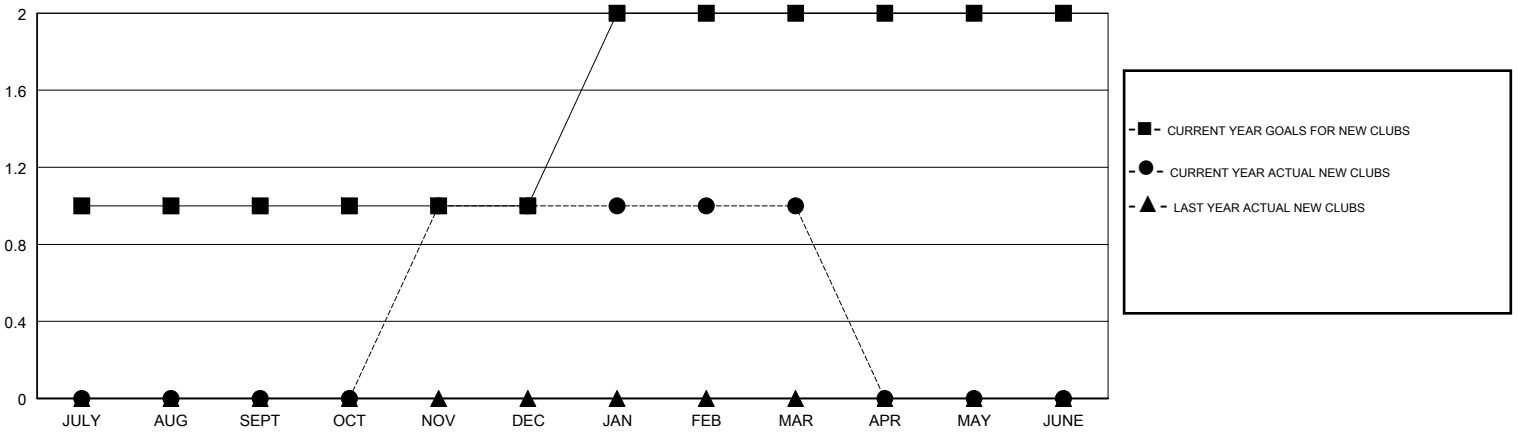
LOCATION ONTARIO

GMT CA

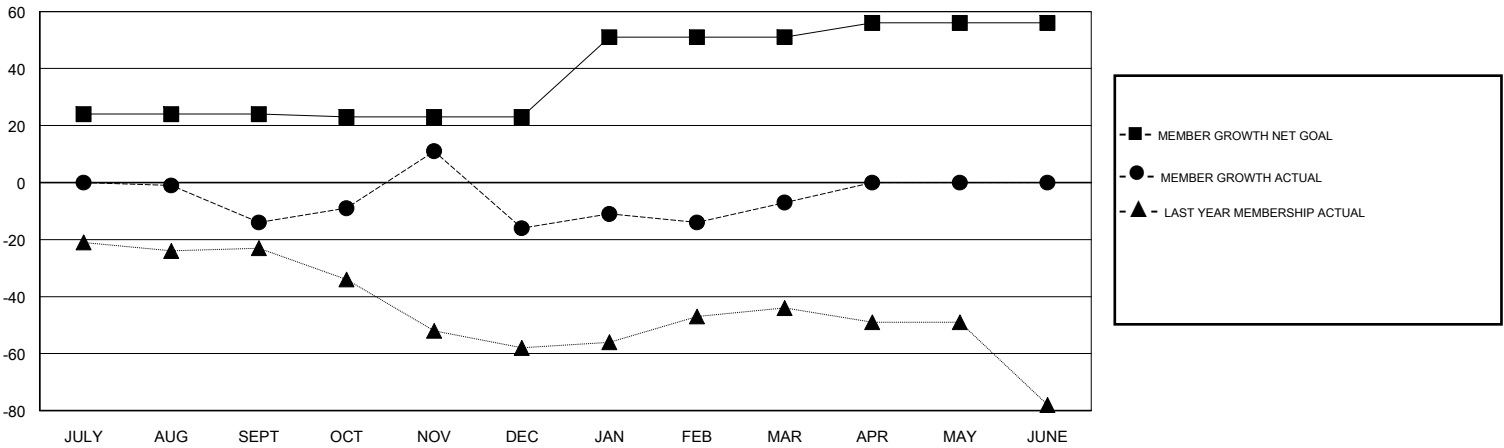
Clubs			
RESULTS FOR 2018-2019			
QUARTER	NEW CLUB GOAL	NEW CLUBS	DROPPED CLUBS
JULY/AUG/SEPT	1	0	1
OCT/NOV/DEC	0	1	1
JAN/FEB/MAR	1	0	0
APR/MAY/JUNE	0	0	0

Members			
RESULTS FOR 2018-2019			
QUARTER	MEMBER GROWTH NET GOAL	MEMBER GROWTH ACTUAL	DROPPED MEMBERS ACTUAL (including transfers)
JULY/AUG/SEPT	24	5	18
OCT/NOV/DEC	-1	54	52
JAN/FEB/MAR	28	34	20
APR/MAY/JUNE	5	0	0

GOALS AND ACTUAL NEW CLUBS CUMULATIVE



GOALS AND ACTUAL MEMBERS CUMULATIVE



DROPPED CLUBS: 2	27 CLUBS OF 42 ADDED 1 OR MORE NEW MEMBERS CLICK HERE FOR CUMULATIVE MEMBERSHIP DATA	<u>GENDER DISTRIBUTION</u>	
DROPPED MEMBERS		MALE	942 (78.17%)
DECEASED	15	FEMALE	263 (21.83%)
CLUB CANCELLED	7	Women Percentage Fiscal Year Goal: 2%	
OTHER	68	TOTAL FAMILY UNIT MEMBERS	189
TOTAL	90	FAMILY MEMBERS PAYING HALF DUES	95